



The Industry Leader in Versatility

Adamation's Food Waste Pulper is available in a range of configuration options to meet your needs, including remote dewatering and pulping systems.

AFWP-10

10 Hp Food Waste Pulper

Reduces common food waste volume by over 85% while virtually eliminating water weight and disposer usage.

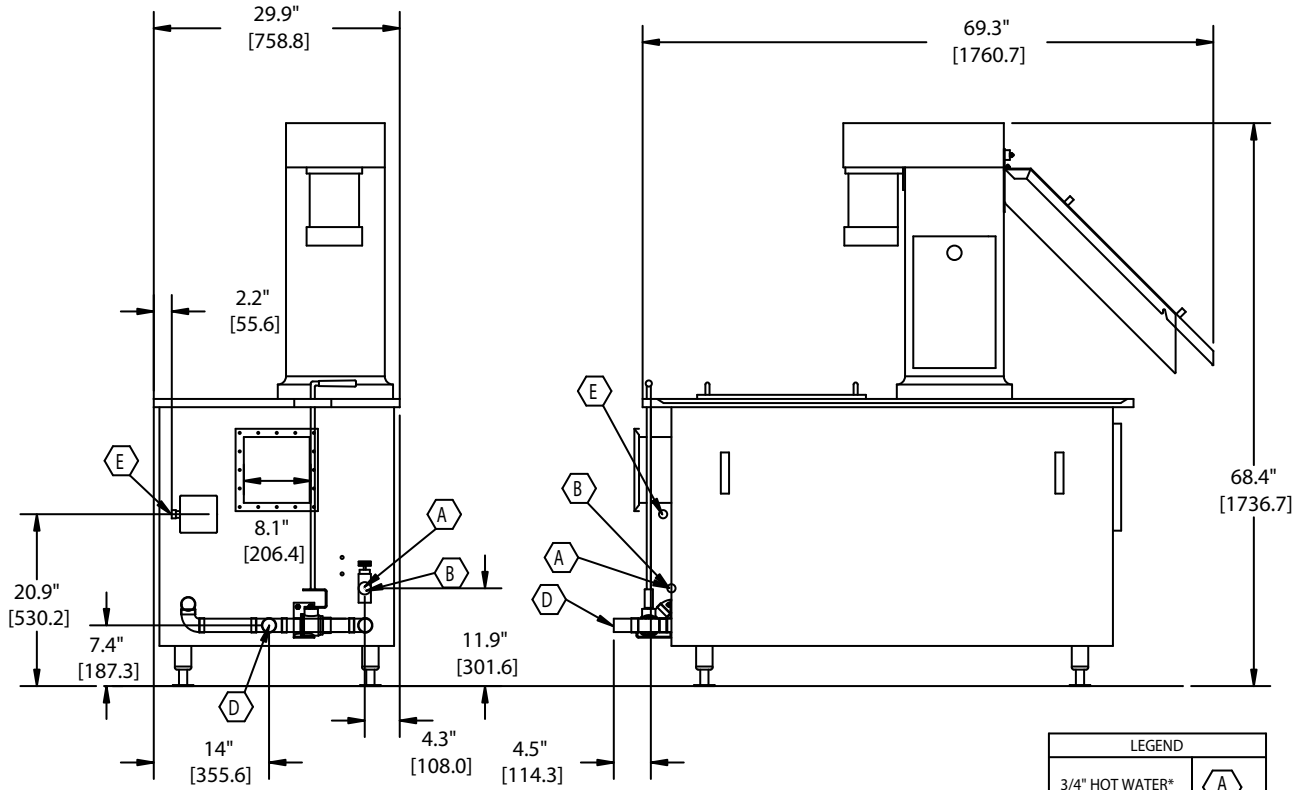
STANDARD FEATURES

- **10 Hp Main Motor**
Powerful motor grinds all common food waste, including bones, paper and plastics. Belt drive protects motor from jams and water damage.
- **Stainless Steel construction**
All main panels fabricated from 16 ga. type 304 stainless steel.
- **Hammer-Anvil Macerator Chamber**
Unique grinding system provides high performance while being very resistant to jamming. Hinged hammers are reversible, providing four cutting surfaces per hammer.
- **Dewatering Screw**
Five foot stainless steel screw lifts waste from macerator chamber while eliminating most liquid weight.
- **Recirculating Water Pumps**
A 3 Hp pump recirculates water through the waste system, reducing fresh water use. A separate pump can be attached to recirculate water through an Adamation Waste Trough, further reducing fresh water usage.
- **Intelligent Electronics Design**
All major electrical systems are protected by separate circuit breakers and all control circuitry runs at a safe 24 volts.
- **Single-point Utility Connections**
- **Door Safety and Low Water Protection**

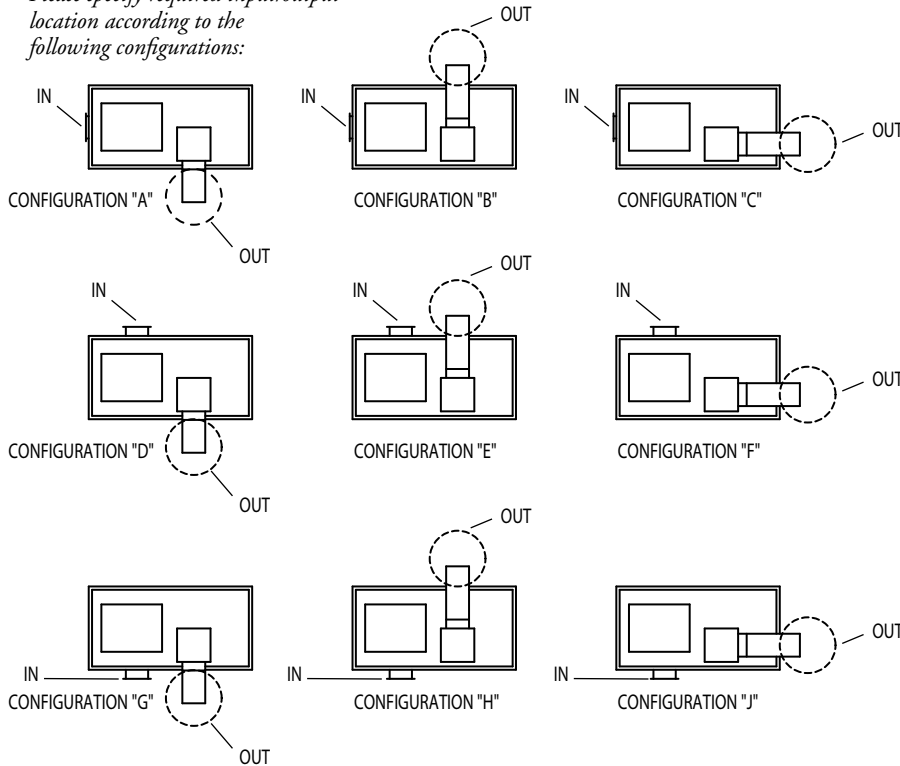
OPTIONAL EQUIPMENT

- **Top Loading Port**
Allows waste to enter through top of unit.
- **Pupler Interceptor Tank**
Separates grease from waste water prior to draining.





Please specify required input/output location according to the following configurations:



LEGEND	
3/4" HOT WATER*	A
3/4" COLD WATER	B
ELECTRICAL	E
1-1/2" DRAIN	D

*may not be required if used in conjunction with Adamation dishmachine

Specifications

Main Motor	Recirculation Pump Motor	Recirc. Pump Capacity	Dewatering Worm Motor	Dewatering Transfer Pump	Crate Size (L x W x H)	Approx. Ship Weight
10 hp	3 hp	250 gpm	3/4 hp	3/4 hp	65 x 38 x 77	1200 lbs.

Electrical Requirements

Current (V/Ph/Cyc)	Amps
208/3/60	44 amps
480/3/60	20 amps