

The Inventors of the Carousel Dishmachine
Adamation is the originator of the carousel concept, and has been the industry leader for nearly 50 years. The space utilization, ergonomics, design flexibility and labor savings are unmatched by any other style of machine.



Adamsveyor

Patented Roller Chain Conveyor System
Rated adjustable speed of 0-45 feet per minute conveyor speed for straight-run applications where tray accumulation is a concern

STANDARD FEATURES

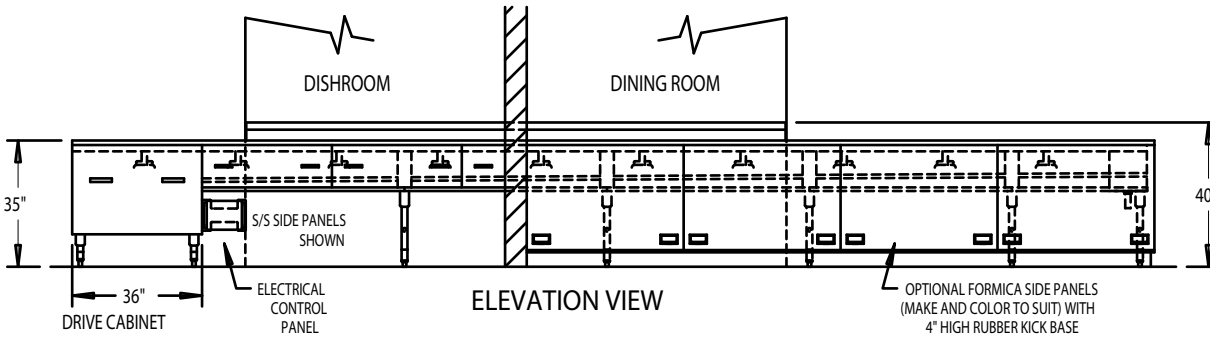
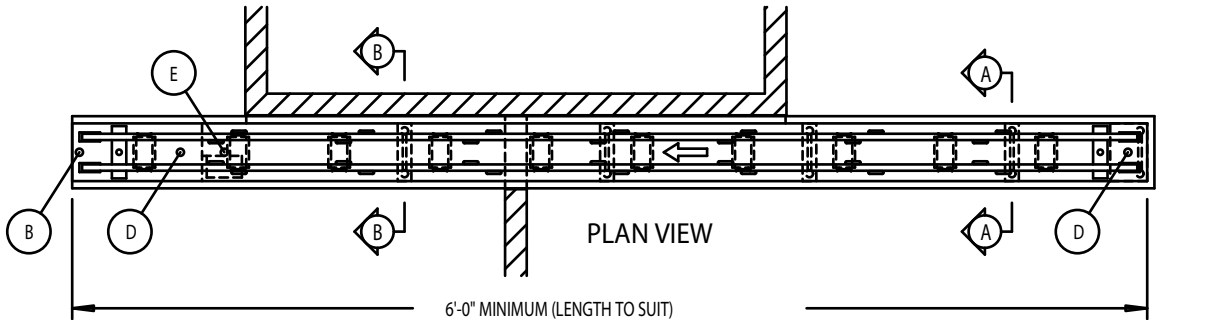
- **Patented Triple Roller System**
A pair of bottom rollers keep chain moving smoothly while trays ride on upper rollers allowing frictionless accumulation.
- **Heavy-duty Stainless Steel construction**
14 ga. stainless steel tables with tubular stainless steel legs.
- **Powerful Clutched Drive Motor**
3/4 hp main motor with clutched drive to prevent damage. On-site speed adjustable from 0-45 feet per minute.
- **Integral Continuous Chain Washer**
One GPM jet spray cleans and lubricates chain rollers.
- **Full-length Chain Return Drip Tray**
Sloped tray runs full-length of conveyor under main table to catch water and debris falling from chain during return travel. Drip tray also features a sink with scrap screen.
- **Drainage Troughs with Scrap Screens**
Table features troughs at both ends which drain into full-length drip tray.

OPTIONAL EQUIPMENT

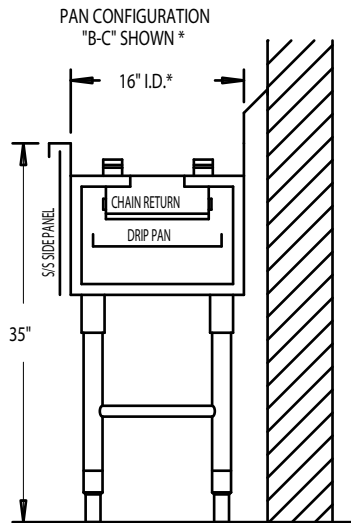
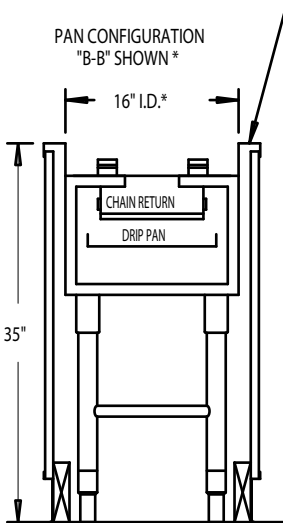
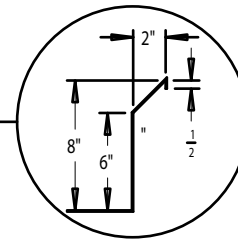
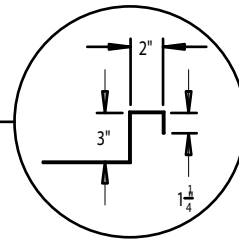
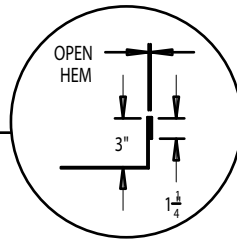
- Flanged Feet
- Limit Switch
With or without time delay.
- Start/Stop Stations
- Stainless Steel Side Panels
- Full Height Formica Panels with Base
- Sight and Sound Barrier Panels
- Pass Through Window Frame and Ledge
- Tray Holder/Sprocket Cover at Idler End
- Flatware Chute
- Auxiliary Drive Units
- "A" Hemmed Table Ledge
- "B" Boxed Table Ledge
- "C" Backsplash Table Ledge
- Glass Breakdown Station



ADAMATION ADAMSVEYOR TRAY CONVEYORS ARE CUSTOM BUILT
AND AVAILABLE IN VARIOUS LENGTHS AND CONFIGURATIONS



* CONSULT FACTORY FOR OTHER CONVEYOR WIDTHS OR PAN CONFIGURATIONS



CONNECTION SCHEDULE

PLUMBING:

- (B) 1/2" COLD WATER CONNECTION FOR CONVEYOR
- CHAIN WASH 6" AFF.
- (D) 1-1/2" FROM CONVEYOR TO DRAIN 17" AFF.

ELECTRICAL:

- (E) 208/220V, 3ph, 60Hz, 2.9A, 16" AFF.
- 440/480V, 3ph, 60Hz, 1.5A, 16" AFF.